

KMA

**When it comes
to Plywood**

PREMIUM QUALITY PLYWOOD

Commercial Plywood

Commercial Ply is a premium product from the house of Aman Brothers Ply. It is made from exclusive poplar species bonded with MR grade synthetic resin. It is 100% borer and termite proof. It also undergoes pre-pressing that ensures homogeneous spread of moisture and adhesive, thus making it warp free. Aman Ply has no core gaps besides having a higher face thickness.



Plywood is an engineered wood manufactured from thin layers or plies of wood veneer that are glued together with adjacent layers having their wood grain rotated up to 90 degrees to one another.

Termite Experiment



It is a Fact

That our plywood is termite and borer proof



TERMITE PROOF

Commercial Veneer

Marsawa



Commercial Veneer

Gurjan



Commercial Veneer

Sumbal/Ceiba



Decorative Veneer

Walnut



Decorative Veneer

Beech



Decorative Veneer

White Ash



Decorative Veneer

Red Oak

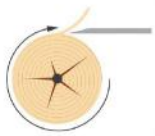


Decorative Veneer

Mahogany



Slicing Technique



Rotary Cut



Crown Cut



Quarter Cut

Jointing Technique



Book Matched



Slip Matched



Reverse Matched



Mix Matched

Veneer Technical Details

Plywood Technical Details

Product Type

Commercial Plywood

Thickness Tolerance

± 0.5 mm

Available Dimension

4' X 8' / 1220mm x 2440mm

Core

Poplar

Thickness

4 mm, 6 mm, 8 mm, 12 mm, 16 mm, 18 mm

Glue

MR Moisture Resistant

Density

500 kg/m³

Bending Strength

M.O.E 4650 N/mm² | M.O.R 42.63 N/mm²

Internal Bonding (IB)

0.56 N/mm²

Screw Strength (Edge)

956 N

Screw Strength (Face)

1092 N

End Uses

Cladding, Doors, Fixed Window Frames,
Partitions, Stage, Advertising Boards etc

KMA